

ALAMEDA CORRIDOR-EAST

Nogales Street at UPRR (L.A. Subdivision)

Grade Separation Project



**Presentation to
Rowland Unified School District Board of Education
October 14, 2008**



Alameda Corridor-East Construction Authority

Los Angeles County, CA



LEGEND	
◆	Safety and/or Traffic Signal Control Measures
■	Roadway Widening/Lane Restriping
★	Grade Separation, Phase I
●	Potential Grade Separation, Phase II
□	Street Closure
△	Grade Crossing Elimination



ALAMEDA CORRIDOR-EAST PROJECT AREA

REVISED DATE

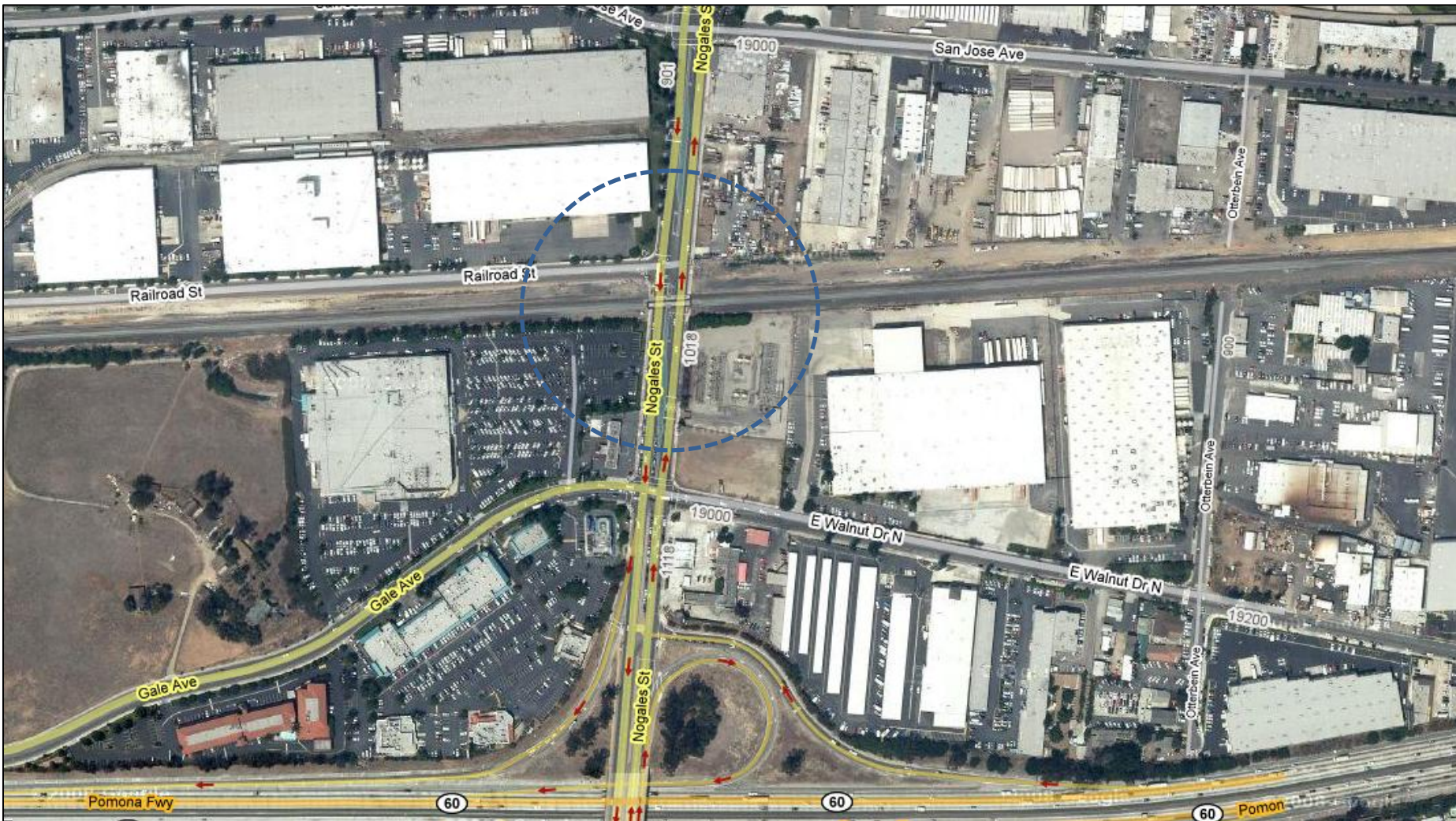


GRADE SEPARATIONS

PROJECT	STATUS
Nogales St. (north)-Industry/West Covina	Completed
Reservoir St.-Pomona	Completed
Ramona Blvd. (Cypress St. vacated)-El	Completed
East End Ave.-Pomona	Completed
Temple Ave. Train Diversion (includes Pomona Blvd.)-Pomona	Fourth mainline; Fall '09 Completion
Brea Canyon Rd.-Diamond Bar/Industry	In Construction/Open in October 2008
Sunset Ave.(includes Orange Ave.)-Industry	In Construction/Summer '10 Completion
Baldwin Ave.-El Monte	Property Acquisition/Expect construction start in 2009
Nogales St. (south)-Industry/LA County	Final Stage in Design/Expect construction start in 2009
San Gabriel Trench (includes 4 crossings)- San Gabriel	In Design/Expect construction start by Winter 2011



PROJECT LOCATION





EXISTING CONDITIONS



- 33 trains a day on two tracks at speeds of up to 60 miles per hour, with forecast of more than 100 trains by 2025
- Nogales Street carries 45,000 vehicles per day, operating at 110% of capacity in peak hours (Level of Service F) at the intersection of Gale/Walnut, expected to worsen to 125% of capacity by 2030



PROPOSED GRADE SEPARATION



NOGALES STREET (L.A. SUBDIVISION) GRADE SEPARATION

VIEW LOOKING NORTH FROM GALE STREET



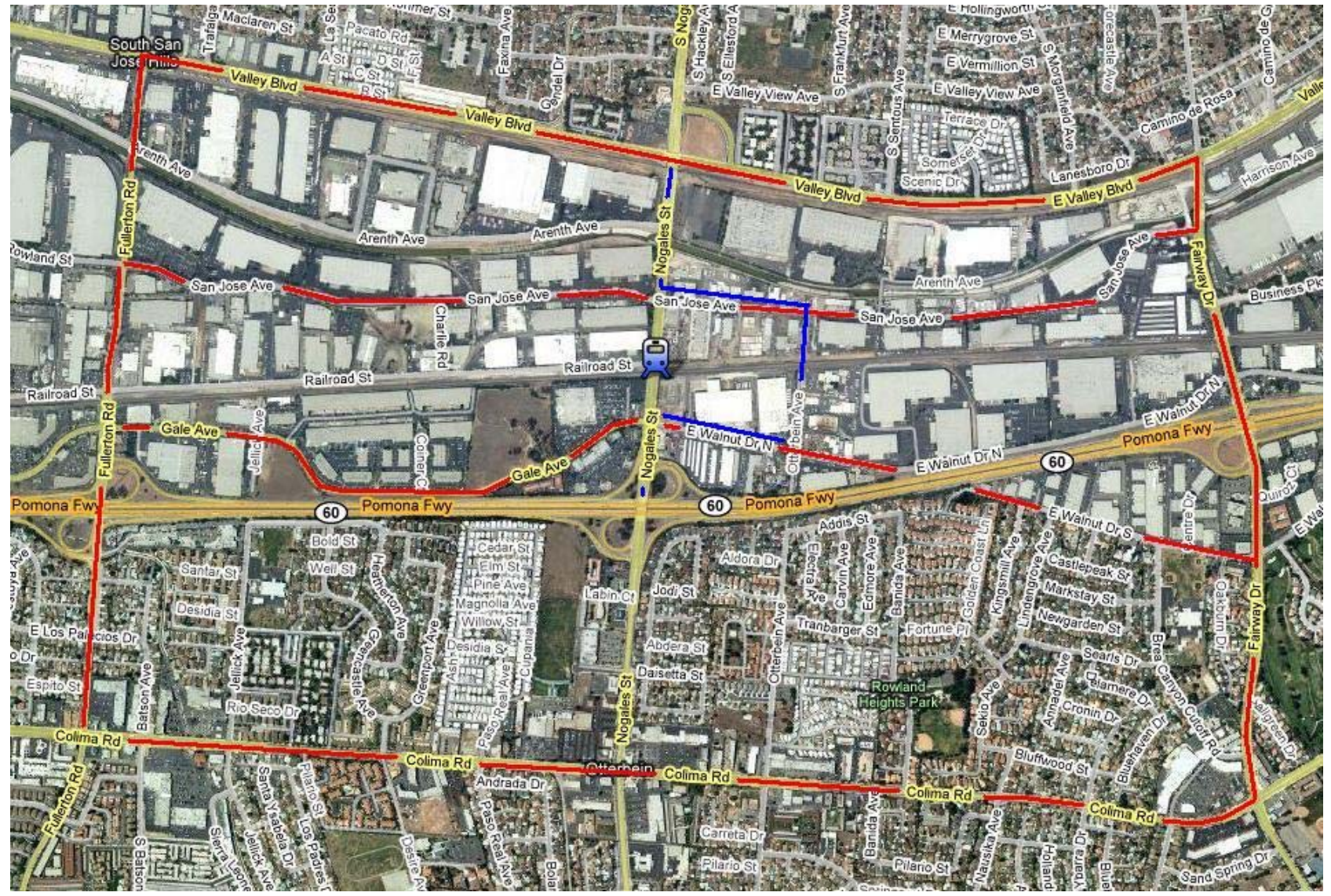


PROJECT ELEMENTS

- Nogales Street at UPRR Tracks (L.A. Subdivision) will be depressed from existing grade to go under the railroad tracks. The existing at-grade crossing will be eliminated;
- Eastbound Railroad Street will be terminated with a Cul-de-sac at Nogales Street;
- The intersection of Nogales Street at San Jose Avenue will be improved with a new traffic signal;
- The intersection of Nogales Street at Walnut Drive North/Gale Avenue will be widened to increase traffic flow;
- Approximately 4,400 feet of Gale Avenue (from Coiner Court to Otterbein Avenue) will be widened to provide two through lanes for each direction;
- Exclusive lane will be provided for the southbound traffic to get on the westbound Pomona Freeway on-ramp, separating it from the right hand turn lane onto westbound Gale Avenue traffic;
- Portions of San Jose Avenue (between Nogales Street and Otterbein Avenue) will be widened; curb, gutter and sidewalk will be constructed along the south side at specific areas to improve traffic safety.
- Otterbein Avenue will be improved from Walnut Drive to San Jose Avenue. Curb, gutter and sidewalk will be constructed on both sides.



DETOURS






CONSTRUCTION OUTREACH

Construction notices

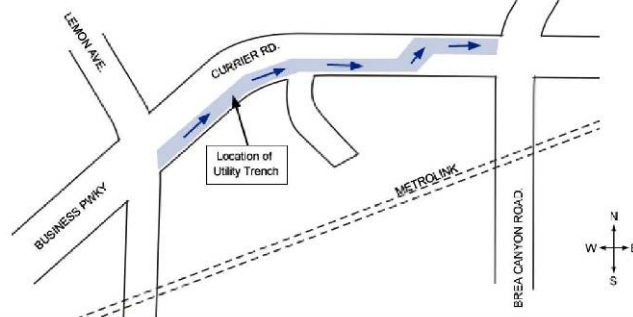
- Notices distributed for major construction activities
- Distributed to affected residents & businesses, schools, emergency responders and key stakeholders
- Posted to website
- English, Spanish & Chinese
- Helpline 888-ACE-1426 monitored 24/7
- Preconstruction survey
- Project Video



Alameda Corridor-East Construction Authority
4900 Rivergrade Road, Ste. 120 Irwindale, CA 91706 (626) 962-9292 fax (626) 472-0094 www.theaceproject.org

****CONSTRUCTION ALERT****

**UTILITIES TO BE RELOCATED UNDER CURRIER ROAD
BETWEEN BREA CYN ROAD AND LEMON AVENUE**



WHAT
Edison electricity lines will be relocated under Currier Road between Brea Canyon Road and Lemon Avenue as part of the Brea Canyon Road underpass project being constructed at the Metrolink/Union Pacific railroad crossing by the Alameda Corridor-East Construction Authority. The electrical lines will be relocated underground in trenches along the south side of Currier Road.

WHAT TO EXPECT
Currier Road traffic will be maintained with one lane in either direction. Access to driveways will be maintained by placing plates over the trenches. Please exercise caution when driving through the work areas.

WHEN
Trenching and installation will begin June 21, 2006 and will be completed near the end of September 2006. Most construction will occur weekdays between 7 a.m. and 4 p.m. Please check the ACE website at www.theaceproject.org or the Helpline at (888) ACE-1426 for the most up-to-date information.

WHERE
Construction will occur on Currier Road between Brea Canyon Road and Lemon Avenue in the City of Industry.

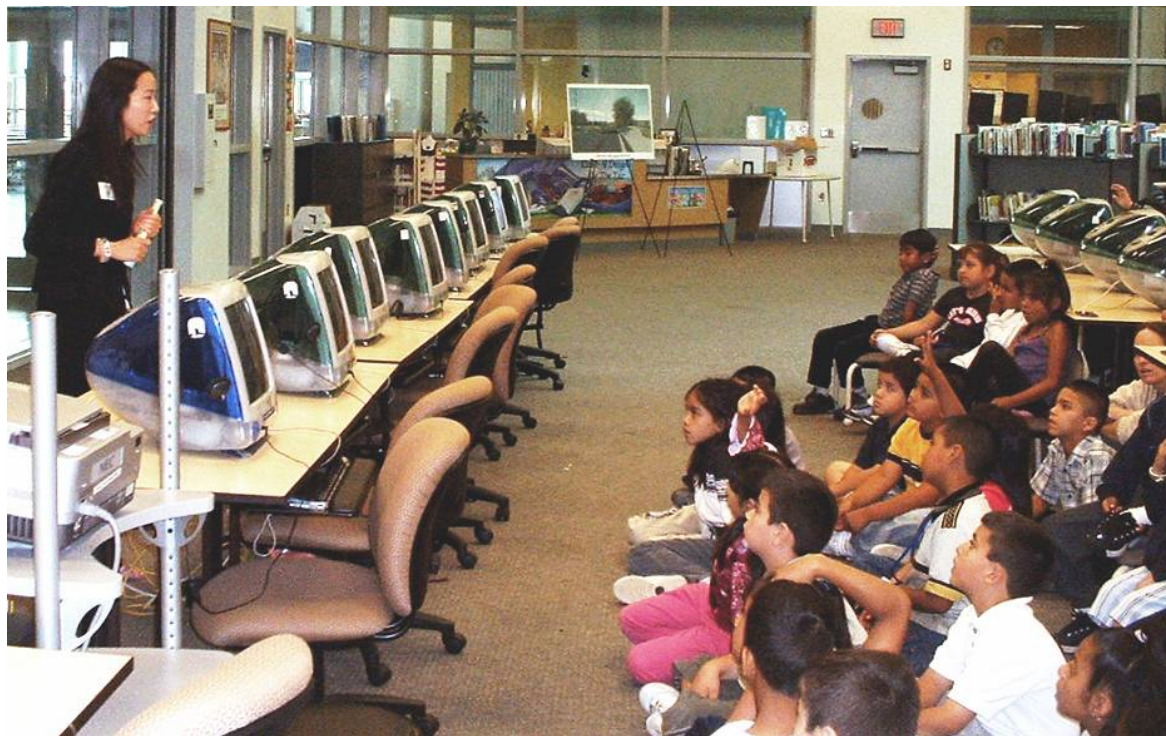
*If you have questions, comments or need the latest construction information, please call the project Helpline or visit the project website at:
(888) ACE-1426 or www.theaceproject.org*

Thank you for your patience and cooperation...At ACE, it's Safety First!

June 14, 2006



STUDENT OUTREACH



- Distributed nearly 20,000 safety kits to students at 25 schools in El Monte, La Puente, Pomona, Rowland Heights, San Gabriel, Walnut and West Covina
- Safety video presentations targeting elementary, middle and high schools
- Coordinate school bus routes/detours with districts